

WHY GSA?

Federal Supply Schedule 56 Contract #GS-07F-0216L



*Experience counts -
K-Con has completed more than
350 projects through GSA!*

K-CON
BUILDING SYSTEMS

GSA Schedule
Contract GS-07F-0216L

*K-Con is a design-build general contractor
specializing in turn-key building solutions
for the federal government*

and

***The #1 provider of Metal Buildings
on GSA!***

EMAIL: INFO@KCONINC.COM | PHONE: 800-394-5266 | WWW.KCONINC.COM

Analysis conclusively shows that... **K-Con is the only firm capable of providing all 17 of these SINs**
Ask to see the comparison chart!

Prefabricated Structures, Roofing, Warehouse Equipment, Installation & Site Preparation

Contract period: Contract
expires April 2021
08/01/2006 - 04/30/2021
Business Size: **Small**
K-Con, Inc.
P.O. Box 70904
Charleston, SC 29415

Toll-free: **800.394.5266**
Telephone: **843.745.0434**
Fax: **843.745.0436**

E-mail: **info@KConInc.com**
Website: **www.KConInc.com**
Tax ID: **57-0901806**
DUNS: **186428231**
Cage Code: **OKES7**

When placing orders under Federal Supply Schedules, **ordering offices need not seek further competition**, synopsise the requirement, make a separate determination of fair and reasonable pricing, or consider small business set-asides. **GSA has already determined the prices of items under schedule contracts to be fair and reasonable.** By placing an order against a schedule using accepted procedures, the ordering office has concluded that the order represents the best value and results in the lowest overall cost alternative (considering price, special features, administrative costs, etc.) to meet the Government's needs.

CATEGORY SPECIAL ITEM NUMBER (SIN)

361-10A Pre-Engineered and Prefabricated Buildings and Structures for Storage Solutions

Includes, but not limited to: storage containers, warehousing structures, hazardous/chemical storage, energy/power shelters, communications shelters, garages, portable vehicle tents, car ports, aircraft hangars, maintenance shelters, vehicle inspection stations, equipment shelters, barns, sheds, freight/shipping containers, portable workshops, and mobile containers. May be wood, fiberglass, steel, aluminium, metal, tension fabric or other membrane material, pre-cast concrete and includes accessories and options



361-10B Pre-Engineered and Prefabricated Buildings and Structures for In-Plant Solutions

Including, but not limited to, in-plant offices, modular wall/partition systems and enclosures, mezzanines and wire partitions and enclosures, fire and sound panels, clean room enclosures, including accessories and options



361-10D Pre-Engineered and Prefabricated Buildings and Structures for Military, Disaster/Emergency Response, and Medical Facility Solutions

Includes, but not limited to: Mobility systems for logistics support, operation/command centers, temporary living quarters and portable barracks, rapid deployment and operations shelters for support operations, expandable shelter systems, military vans, guard towers, bunkers, checkpoints, medical tents and facilities, deployment systems storage, and includes accessories and options



361-10E Pre-Engineered and Prefabricated Buildings and Structures for Professional Facility Solutions

Includes, but not limited to: Offices, classrooms, laboratories, exhibition halls and other professional facilities. May be mobile, modular, tension fabric or membrane structures, pre-cast concrete, pre-engineered, skid-mounted, trailer-mounted, and includes accessories and options



361-10G Pre-Engineered and Prefabricated Buildings and Structures for Outdoor Shelter and Security Shelter Solutions

Includes, but not limited to: Guard houses/booths (with or without bullet resistance), ticket/cashier booths, parking attendant booths, smoking shelters, bus shelters, and concession stands. May be mobile, modular, pre-assembled, unassembled, pre-cast concrete, wood, metal, aluminium, steel, tension fabric or membrane, and includes accessories and options



www.kconinc.com
800-394-5266

Most items are suitable for support of emergency and disaster recovery efforts

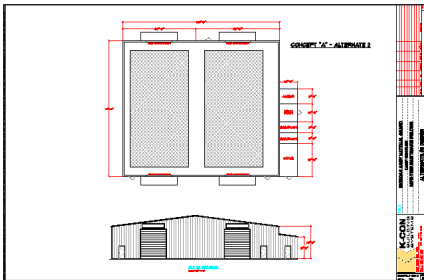
361-10H Pre-Engineered and Prefabricated Buildings and Structures for Restroom, Shower, and Laundry

Includes, but not limited to: Portable or stationary restroom or restroom/shower buildings; restroom and shower trailers; restroom facilities such as porta-potties, portable toilets and handicap accessible, ADA compliant, restroom facilities; comfort stations, mobile laundry facilities; pre-cast concrete restrooms; and includes accessories and options



361-30 Ancillary Services relating to Pre-Engineered/Prefabricated Buildings and Structures

Including services relating to and ordered in conjunction with products purchased under the supply schedule contract, such as, field assembly, training, consultation and design assistance.



361-32 Installation and Site Preparation for Pre-Engineered/Prefabricated Buildings and Structures

Applicable to installation and site preparation services ordered in conjunction with buildings and structures purchased under the supply schedule contract.



357-11C Warehouse Equipment and Supplies

Including, but not limited to, storage systems, storage racks, conveyors and conveyor systems, conveyor belts, slings, hooks, rope, chain, webbing, and material handling options and accessories such as strapping, shrink wrap, sealer, sealing iron, load binder, cord, and twine.



357-97 Ancillary Repair and Alterations related to Warehouse Equipment Solutions

Repair and Alterations ancillary to existing SINS under this Schedule. Ancillary Repair and Alterations projects are those (1) solely associated with the repair, alteration, delivery or installation of products or services also purchased under this Schedule, and which are (2) routine and non-complex in nature, such as routine painting or resurfacing of floors, simple hanging of drywall, basic electrical or plumbing work, removal/relocation of non-load bearing walls, minor alterations to install storage systems, conveyors or conveyor systems, and similar noncomplex services.

563-4 Roofing Materials, Products and Services

Including sustainable, energy efficient/savings solutions, and installation and site preparation, related to and ordered in conjunction with products for repair or replacement of an existing roof.



563-23 Doors, Windows, Panels, Skylights Panels Shutters

Including, but not limited to, Energy Star, energy efficient, energy savings, sustainable, interior and exterior, residential and commercial, security doors and windows, security/bullet resistant panels, metal doors, patio doors, strip doors, overhead doors, garage doors, warehouse doors, screen doors, storm doors, wood doors and door frames, and options and accessories and associated hardware offered in conjunction with doors, shutters, and windows.



WHY GSA? **General Services Administration** **Federal Supply Schedule Contract**

K-Con and GSA provides Federal agencies with the opportunity to make a simple "Best Value Determination" and subsequently place the order directly with a selected contractor. GSA does not require purchasing activities to accept the lowest price, or even obtain more than one price. This is because **GSA has already negotiated the pricing and determined that the pricing practices for GSA contract holders are fair and reasonable.** For this reason, an order placed with a GSA contract holder is deemed to have been placed under full and open competition.

K-Con can provide a complete, turn-key building system, all through an existing GSA contract.



Simplified Acquisition & Expedited Design-Build Project Delivery

563-98 Ancillary Services related to Building Materials/Supplies

And ordered in conjunction with products (other than roofing products ordered under SIN 563 4) purchased under the supply schedule contract. Services include but are not limited to: set up, installation, training and/or design assistance.



412-50 Ancillary Service Related to Alternative Energy Solutions and Power Distribution

Commercial services related to and ordered in conjunction with products purchased under the supply Schedule contract. Including, but not limited to, services such as simple installation (design through startup), maintenance, and training.



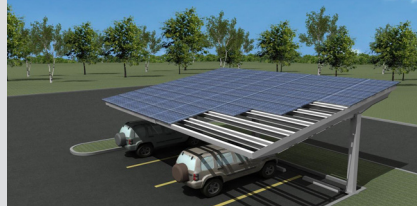
206-3 Alternative and Renewable Sustainable Energy Solutions, Including Solar Energy Systems, Fuel Cells, Geothermal, and Wind Power

Includes all types of solar energy solutions, such as prepackaged PV and solar thermal systems, solar water pumping systems, and solar water heaters; including rental, options, parts and accessories. Includes, but not limited to, fuel cells, hydrogen based energy systems, wind energy systems, geothermal energy solutions, and other environmentally sustainable renewable energy generation systems; including rental, options, parts and accessories.



412-51 Installation and Site Preparation Services for Alternative Energy Solutions and Power Distribution Equipment

Relating to and ordered in conjunction with products purchased under the supply Schedule contract, including installation and site preparation which requires construction.



412-52 Power Systems Engineering Support for Alternative Energy Solutions and Power Distribution Equipment

Including, but not limited to, consulting, program management, engineering, technical, data management, and administrative support. Services offered must be in support of alternative energy solutions, power systems and related products only.

WHO and HOW?

All Federal Agencies and Procurement Activities are authorized to utilize simplified acquisition through GSA and are encouraged by the Small Business Administration (SBA) to take advantage of the opportunities afforded by the program.

Delivery Orders - The scope of the GSA contract identified herein is nationwide. Delivery requirements will be stipulated on individual Delivery Orders. Task Orders are prepared by a Government Ordering Officer (a duly warranted Contracting Officer whose warrant authorizes purchases from the GSA Schedules) in accordance with the terms and conditions of this BPA, the GSA Schedules, and FAR 8.4.

Ordering Methods - Task Orders are placed directly with K-Con in accordance with published ordering procedures (reference FAR 8.4). Orders can be placed via E-Mail, paper or fax, SF1449, or Department of Defense (DD) Form 1155, or by telephone using Government Wide Credit Card. These options are subject to local policy. In addition to the use of the Government Wide Credit Card, organizations may place orders subject to invoice and payment through Government Paying Offices. Government Wide Card Holders - Call K-Con at 800-394-5266. SF1449 Orders - Process SF1449's through the servicing base contracting office.

K-Con will provide you with a budget estimate and drawing for your next project.



BUILDING SYSTEMS

GSA# GS-07F-0216L **CAGE CODE:** 0KES7 **DUNS:** 186428231 **TAX ID:** 57-0901806