

WHY GSA?

Federal Supply Schedule 56
Contract #47QSWA21D0075



Experience counts - K-Con has completed more than 400 projects through GSA!

K-CON
CONSTRUCTION



K-Con is a design-build general contractor specializing in turn-key building solutions for the federal government
and

The #1 provider of Metal Buildings on GSA!

Analysis conclusively shows that... K-Con is the only firm capable of providing all 17 of these SINs - Ask to see the comparison chart!

**Prefabricated
Structures,
Roofing,
Warehouse
Equipment,
Installation & Site
Preparation**

Contract period: Contract
expires August 2026
09/01/2021 - 08/31/2026
Business Size: Small
K-Con, Inc.
P.O. Box 70904
Charleston, SC 29415

Toll-free: 800.394.5266
Telephone: 843.745.0434
Fax: 843.745.0436

E-mail: info@KConInc.com
Website: www.KConInc.com
Tax ID: 57-0901806
DUNS: 186428231
Cage Code: OKES7

When placing orders under Federal Supply Schedules, **ordering offices need not seek further competition**, synopsise the requirement, make a separate determination of fair and reasonable pricing, or consider small business set-asides. GSA has already determined the prices of items under scheduled contracts to be fair and reasonable. By placing an order against a schedule using accepted procedures, the ordering office has concluded that the order represents the best value and results in the lowest overall cost alternative (considering the price, special features, administrative costs, etc.) to meet the Government's needs.

CATEGORY SPECIAL ITEM NUMBER (SIN)

361-10A Pre-Engineered and Prefabricated Buildings and Structures for Storage Solutions

Includes, but is not limited to storage containers, warehousing structures, hazardous/chemical storage, energy/power shelters, communications shelters, garages, portable vehicle tents, carports, aircraft hangars, maintenance shelters, vehicle inspection stations, equipment shelters, barns, sheds, freight/shipping containers, portable workshops, and mobile containers. May be wood, fiberglass, steel, aluminum, metal, tension fabric or other membrane material, pre-cast concrete, and includes accessories and options.



361-10B Pre-Engineered and Prefabricated Buildings and Structures for In-Plant Solutions

Including, but not limited to in-plant offices, modular wall/partition systems and enclosures, mezzanines and wire partitions and enclosures, fire and sound panels, and clean room enclosures, including accessories and options.



361-10D Pre-Engineered and Prefabricated Buildings and Structures for Military, Disaster/Emergency Response, and Medical Facility Solutions

Includes, but is not limited to mobility systems for logistics support, operation/command centers, temporary living quarters and portable barracks, rapid deployment, and operations shelters for support operations, expandable shelter systems, military vans, guard towers, bunkers, checkpoints, medical tents and facilities, deployment systems storage, and includes accessories and options.



361-10E Pre-Engineered and Prefabricated Buildings and Structures for Professional Facility Solutions

Includes, but is not limited to offices, classrooms, laboratories, exhibition halls, and other professional facilities. May be mobile, modular, tension fabric or membrane structures, pre-cast concrete, pre-engineered, skid-mounted, trailer-mounted, and includes accessories and options.



361-10G Pre-Engineered and Prefabricated Buildings and Structures for Outdoor Shelter and Security Shelter Solutions

Includes, but is not limited to: guard houses/booths (with or without bullet resistance), ticket/cashier booths, parking attendant booths, smoking shelters, bus shelters, and concession stands. May be mobile, modular, pre-assembled, unassembled, pre-cast concrete, wood, metal, aluminum, steel, tension fabric or membrane, and includes accessories and options.



**www.kconinc.com
800-394-5266**

Most items are suitable for support of emergency and disaster recovery efforts.

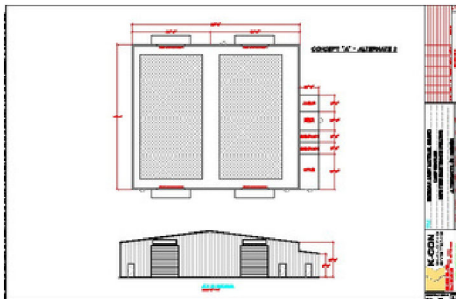
361-10H Pre-Engineered and Prefabricated Buildings and Structures for Restroom, Shower, and Laundry

Includes, but is not limited to: portable or stationary restroom or restroom/shower buildings; restroom and shower trailers; restroom facilities such as porta-potties, portable toilets, and handicap accessible, ADA compliant, restroom facilities; comfort stations, mobile laundry facilities; pre-cast concrete restrooms; and includes accessories and options.



361-30 Ancillary Services relating to Pre-Engineered/Prefabricated Buildings and Structures

Including services relating to and ordered in conjunction with products purchased under the supply schedule contract, such as, field assembly, training, consultation and design assistance.



361-32 Installation and Site Preparation for Pre-Engineered/Prefabricated Buildings and Structures

Applicable to installation and site preparation services ordered in conjunction with buildings and structures purchased under the supply schedule contract.



357-11C Warehouse Equipment and Supplies

Including, but not limited to, storage systems, storage racks, conveyors and conveyor systems, conveyor belts, slings, hooks, rope, chain, webbing, and material handling options and accessories such as strapping, shrink wrap, sealer, sealing iron, load binder, cord, and twine.



357-97 Ancillary Repair and Alterations related to Warehouse Equipment Solutions

Repair and Alterations ancillary to existing SINs under this Schedule. Ancillary Repair and Alterations projects are those (1) solely associated with the repair, alteration, delivery, or installation of products or services also purchased under this Schedule, and are (2) routine and non-complex in nature, such as routine painting or resurfacing of floors, simple hanging of drywall, basic electrical or plumbing work, removal/relocation of non-load bearing walls, minor alterations to install storage systems, conveyors or convey systems, and similar non-complex services.

563-4 Roofing Materials, Products and Services

Including sustainable, energy efficient/savings solutions, and installation and site preparation, related to and ordered in conjunction with products for repair or replacement of an existing roof.



563-23 Doors, Windows, Panels, Skylights Panels Shutters

Including, but is not limited to: ENERGY STAR, energy efficient, energy savings, sustainable, interior and exterior, residential and commercial, security doors and windows, security/bullet resistant panels, metal doors, patio doors, strip doors, overhead doors, garage doors, warehouse doors, screen doors, storm doors, wood doors and door frames, and options and accessories and associated hardware offered in conjunction with doors, shutters, and windows.



WHY GSA?

General Services Administration Federal Supply Schedule Contract

K-Con and GSA provides Federal agencies with the opportunity to make a simple "Best Value Determination" and subsequently place the order directly with a selected contractor. GSA does not require purchasing activities to accept the lowest price, or even obtain more than one price. This is because GSA has already negotiated the pricing and determined that the pricing practices for GSA contract holders are fair and reasonable. For this reason, an order placed with a GSA contract holder is deemed to have been placed under full and open competition.

K-Con can provide a complete, turn-key building system, all through an existing GSA contract.



Simplified Acquisition & Expedited Design-Build Project Delivery

563-98 Ancillary Services related to Building Materials/Supplies

And ordered in conjunction with products (other than roofing products ordered under SIN 563 4) purchased under the supply schedule contract. Services include but are not limited to: set up, installation, training and/or design assistance.



206-3 Alternative and Renewable Sustainable Energy Solutions, Including Solar Energy Systems, Fuel Cells, Geothermal, and Wind Power

Includes all types of solar energy solutions such as prepackaged PV and solar thermal systems, solar water pumping systems, and solar water heaters; including rental, options, parts and accessories. Includes, but is not limited to: fuel cells, hydrogen based energy systems, wind energy systems, geothermal energy solutions, and other environmentally sustainable renewable energy generation systems; including rental, options, parts and accessories.



412-50 Ancillary Service Related to Alternative Energy Solutions and Power Distribution

Commercial services related to and ordered in conjunction with products purchased under the supply schedule contract. Including, but not limited to services such as simple installation (design through startup), maintenance, and training.



412-51 Installation and Site Preparation Services for Alternative Energy Solutions and Power Distribution Equipment

Relating to and ordered in conjunction with products purchased under the supply schedule contract, including installation and site preparation which requires construction.



412-52 Power Systems Engineering Support for Alternative Energy Solutions and Power Distribution Equipment

Including, but not limited to, consulting, program management, engineering, technical, data management, and administrative support. Services offered must be in support of alternative energy solutions, power systems and related products only.

WHO and HOW?

All Federal Agencies and Procurement Activities are authorized to utilize simplified acquisition through GSA and are encouraged by the Small Business Administration (SBA) to take advantage of the opportunities afforded by the program.

Delivery Orders - The scope of the GSA contract identified herein is nationwide. Delivery requirements will be stipulated on individual Delivery Orders. Task Orders are prepared by a Government Ordering Officer (a duly warranted Contracting Officer whose warrant authorizes purchases from the GSA Schedules) in accordance with the terms and conditions of this BPA, the GSA Schedules, and FAR 8.4.

Ordering Methods – Task Orders are placed directly with K-Con in accordance with published ordering procedures (reference FAR 8.4). Orders can be placed via E-Mail, paper or fax, SF1449, or Department of Defense (DD) Form 1155, or by telephone using Government Wide Credit Card. These options are subject to local policy. In addition to the use of the Government Wide Credit Card, organizations may place orders subject to invoice and payment through Government Paying Offices. Government Wide Card Holders – Call: K-Con at 800-394-5266. SF1449 Orders – Process SF1449's through the servicing base contracting office.

K-Con will provide you with a budget estimate and drawing for your next project.

